



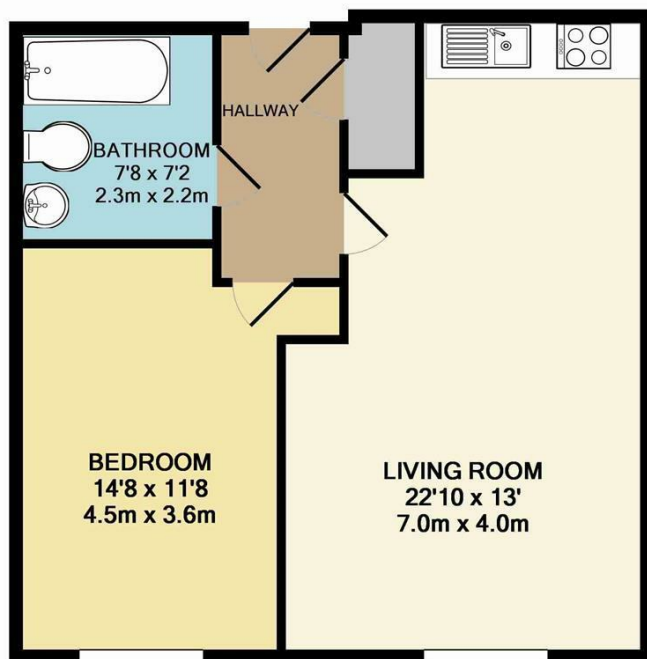
401 LEXINGTON COURT BROADWAY

GREATER MANCHESTER, M50 2UG

£900 PCM

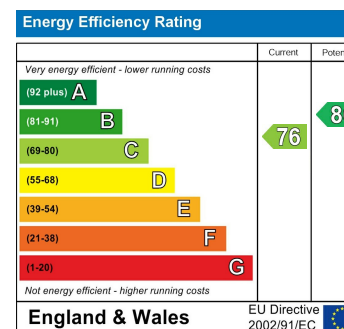
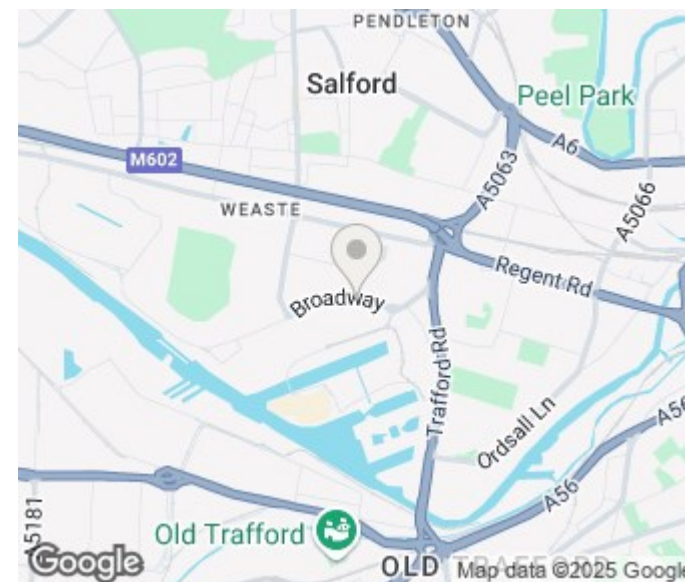
A modern fourth floor apartment with one double bedroom located on the edge of Salford Quays with easy access to the M60 Motorway and City Centre Manchester Via the Metro. Close to Salford university campus The accommodation comprises a entrance hallway large living room open to a fitted kitchen, large double bedroom, three piece bathroom with shower, electric heating, double glazing and the property benefits from an allocated parking space. Fully furnished to a very high standard and Available from the 22nd April 2025.

buckleyfrayne



TOTAL APPROX. FLOOR AREA 507 SQ.FT. (47.1 SQ.M.)

Whilst every attempt has been made to ensure the accuracy of the floor plan contained here, measurements of doors, windows, rooms and any other items are approximate and no responsibility is taken for any error, omission, or mis-statement. This plan is for illustrative purposes only and should be used as such by any prospective purchaser. The services, systems and appliances shown have not been tested and no guarantee as to their operability or efficiency can be given
Made with Metropix ©2016



Agents Note: Whilst every care has been taken to prepare these particulars, they are for guidance purposes only. All measurements are approximate and are for general guidance purposes only and whilst every care has been taken to ensure their accuracy, they should not be relied upon and potential buyers/tenants are advised to recheck the measurements

Manchester Office Lettings
6-14 Great Ancoats Street
Northern Quarter
Manchester
M4 5AZ

0161 236 0004
mark.buckley@buckleyfrayne.co.uk
www.buckleyfrayne.co.uk

buckleyfrayne